

Sunday Schedule

Guided Meditation - 9:45 AM
Sunday Service —10:00 AM

ON-LINE SERVICE

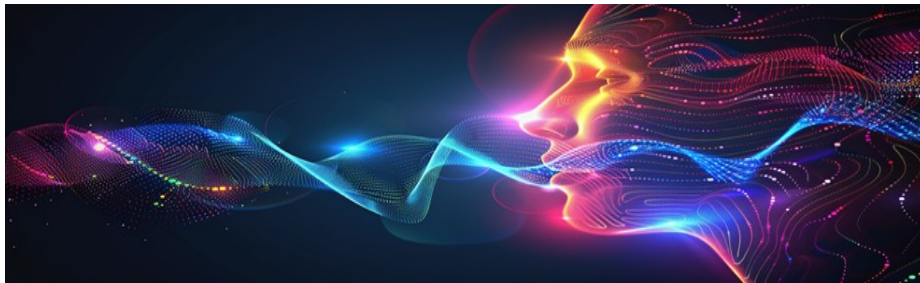
[www.YouTube.com/@CSL Beaumont](http://www.YouTube.com/@CSL_Beaumont)



MINISTER'S REFLECTIONS: "Ministry's Voice"— May 2025

Reverend Dr. Michael Curcuru

CSLB'S Ministry's Voice is of vision, mission, and purpose. Its vision is *a world that works for everyone with no one left behind*. Its mission is *changing lives* purpose involves teaching principles, practices, and prayer, experience transformation. This transformation in-ty, spiritual understanding, active expression.



one thought at a time. Its spiritual tools of princi-which can help people in their everyday lives. cludes financial prosperi-physical health, and cre-

CSLB's Ministry aims to co-create a cherished spiritual community based on compassion, creativity, and committed involvement. To fulfill this vision and mission, ministry unfolds as a living dialogue—an ongoing call and response between the divine essence within and the collective spirit of the community. It thrives in moments of sacred exchange, where shared wisdom blossoms, and individuals are empowered to embody their highest potential. Weaving together intention and inspiration, CSLB's ministry is a bridge that unites hearts and minds, offering a sanctuary of authenticity where all are honored.

Heschel says, "Our goal should be to live life in radical amazement...get up in the morning and look at the world in a way that takes nothing for granted. Everything is phenomenal; everything is incredible; never treat life casually. To be spiritual is to be amazed." The Center for Spiritual Living Beaumont's ministry emphasizes vision, mission, and purpose, aspiring to create a world that works for everyone with no one left behind. It focuses on transformation through spiritual tools, fostering a community of compassion, creativity, and involvement. Rev. Dr. Michael Curcuru invites the embracing of Spiritual Splendor, by living in the radical amazement and conscious connection of love as all.

The Center for Spiritual Living Beaumont's ministry emphasizes vision, mission, and purpose, aspiring to create a world that works for everyone with no one left behind. It focuses on transformation through spiritual tools, fostering a community of compassion, creativity, and involvement. Rev. Dr. Michael Curcuru invites the embracing of Spiritual Splendor, by living in the radical amazement and conscious connection of love as all.

"Do good whenever, wherever, and however you can, for as long as you can." (John Wesley). "You cannot swim for new horizons until you have the courage to let go of the shore," (William Faulkner). "When the scientists finally reach the mountain tops of understanding, they will find the mystics waiting for them," (Ernest Shurtleff Holmes).

Blessings Always, Reverend Dr. Michael Curcuru

ONE OF OUR OWN - JASMINE KOTSAY

To see the full article scan the QR Code below or see Marsha for a copy



Riverside County Office of Education

April 7 at 10:34 AM



Jasmine Kotsay is an induction candidate in RCOE School of Education's Center for Teacher Innovation (CTI), teacher induction program. She is also a role model that parents with special education students in classrooms across #RivCo find hope in for their children to emulate someday.

"Meet Jasmine Kotsay: Expanding on a Vision for Education" RCOE NEWSROOM go.rcoe.us/CTI-JasminesJourney

#CTIjourney

RCOE NEWSROOM

go.rcoe.us/CTI-JasminesJourney

**CENTER FOR
TEACHER
INNOVATION**
transforming the journey

MEETINGS AND NEWS

MONTHLY MEETINGS

You are invited to attend any of these meetings or gatherings.

May 1, 9:50 AM—SOM Discussion Group at Emmy's home
(be there at 9:30 for meet & greet & morning munchies, coffee & tea)

Grief Support Group—Meets every Thursday in the Sanctuary at 1:00 PM

May 12, 10, 10:00 AM - Events Team

May 12, 12:00 PM - Member Services Meeting

May 21, 4:30 PM - Finance Team Meeting

May 22, 1:00 PM—Board of Trustees Meeting

Watch for a variety of Wednesday activities
in Carter Hall and the Sanctuary at 5:00 PM

FELLOWSHIP, FOOD, and FUN After Sunday Service

EVERYONE IS WELCOME!

Please join us and contribute when you can or give a Love Offering

1st Sunday – Southwestern food

2nd Sunday – Soup, sandwiches, salads

3rd Sunday – Potluck themes change monthly

MEMBERSHIP NEWS

VOLUNTEER FOR THE MONTH

I am sure you have seen Matthew with his Mom Amy Lorenz. He is never too far from her and is always there to assist if needed. The one thing he is responsible for is making sure recyclables are gathered up. His reward for recycling is he is able to add the proceeds to his college fund. Matthew also helps take out the trash on Sunday and comes to the Center with his Mom to retrieve the trash cans and put them in their proper place

Let's help Matthew grow that fund by bringing your cans and bottles to the Center

Thank you Matthew for all your help.

OF MAY

HELP US CELEBRATE THE BIRTHDAYS OF
OUR FAMILY AND FRIENDS

MAY BIRTHDAYS

JOIN US AFTER SERVICE FOR BIRTHDAY CAKE
THE FIRST SUNDAY OF EVERY MONTH



MINISTRY OF PRAYER

OUR LICENSED PRACTITIONERS

Evonne Fowler, RScP
951 663-9947

Adrian Madden, RScP
951 378-0688

Rev. Neil Haner
310-947-1381

Siv Adams, RScP
909-730-3917

Tommi Jones, RScP
909 648-7305

TWO MINUTE MIRACLES **Every Sunday after service**

Every Sunday after service our licensed Practitioners or Ministers (listed above) are available for a *Two Minute Miracle*—a quick prayer—just for you. You can also schedule a full Practitioner Session at a later time for a more thorough spiritual coaching session. Feel free to contact them directly or leave a message at the Center— 951-845-6328—and one of our Practitioners or Ministers will contact you.

PRAYER BOX

Our Prayer box is located in the bookcase between Carter Hall and the sanctuary. If you have a prayer request, put it in that box and your prayer will be confidentially distributed to our Practitioners who will hold you in prayer for 2 weeks.

*Prayer support is available at the Center office between 9:00 AM to 12:00 PM on Wednesday and Thursday.
Feel free to call or visit.*

MEDITATION TIME

Every Sunday
at 9:45 in person and online at CSL
Beaumont

This is a guided meditation led by one of our Practitioners or Ministers.
All are welcome.

CONNECT WITH CSL BEAUMONT

CSLB Donation Plaque Update

The beautiful Donation Plaque in Carter Hall was donated by the Estate of Rebekah McKovich-Cerda. Rebekah was a practitioner here at CSLB. She made her transition in 2014. The gifting levels and size of the plates are listed below. Donations can be made as a memorial, in honor of a loved one, or a gift of abundance to your spiritual home.

Plate Information

Platinum	Donation of \$30,000 or more	
	Jack Bell	2001
	Helen Spencer	2002
	Marian T Carter	2003
	Emmy Bell-Piddington	2016
	John Cerda & Rebekah McKovich-Cerda	2024
	Lois Ingham	2024
Gold	Donation of \$ 15,000 to \$29,999	
	Jean Larstea	2003
	Mike & Anne Pickett	2015
Silver	Donation of \$5000 to \$14,999	
	Pearl Hammond	1994
	Lois Alegra Dacey	2013
	John & Rebekah McKovich-Cerda	2015
	Solera Real Estate	2023
	Rev. Neil Haner	2024
	Solera Real Estate	2024
	Jack Burnham	2024
	Solara Real Estate	2024

The value and size of the individual plaques are for single donations

Platinum	Large	4 x 4	\$30,000 +
Gold	Medium	2.5 X 4	\$15,000 to \$29,999
Silver	Small	1.5 X 4	\$5000 to \$14,999

FELLOWSHIP

**Sign-
up
Today!**

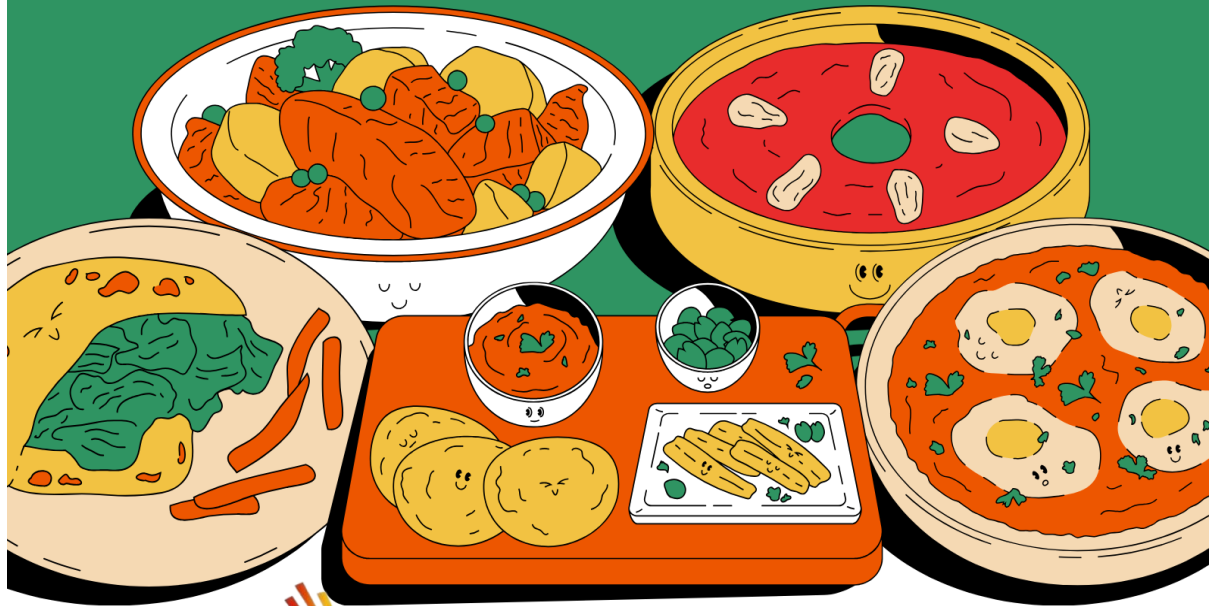
\$50 FELLOWSHIP FOOD CHALLENGE


BRING A DISH TO SHARE!

We all enjoy the fellowship and want to continue the Sunday meals. There will be a BOT approved reimbursement of \$50 for the person bringing the main dish each week and it needs to feed at least 30 people. The rest of us will continue to bring side dishes like soups, salads, or desserts.

SIGN UP AT THE CENTER OR

CONTACT EMMY AT 951-765-7673
OR EMMYLOVES2DANCE@GMAIL.COM.



 Center for
Spiritual Living Beaumont

FELLOWSHIP

SHARE A MEAL AND MAKE A NEW FRIEND

Bring a Friend Sunday

Invite a friend or someone
you haven't seen at CSLB for
awhile....

Come for the Music,
Meditation and
Message!

**Fellowship
Lunch
After
Service**



FUN AND FELLOWSHIP



Mother's Day
CHAMPAGNE BRUNCH

On this Mother's Day, we would like to honor you for
all your years of caring for your loved ones by
providing a Sunday Brunch
on Mother's Day, Sunday May 11th at 11:15 AM
The Center For Spiritual Living Beaumont
802 Maple Ave. Beaumont
951-845-6328
www.cslbeaumont.org

FUN AND FELLOWSHIP



METAPHYSICAL MOVIE NIGHT

SPAGHETTI DINNER & Discussion

May 14th
5:00-8:00 PM



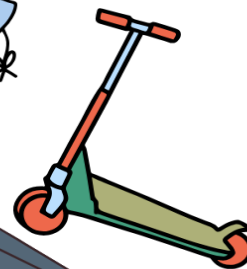
Center for
Spiritual Living
Beaumont

Invite
a
Friend!

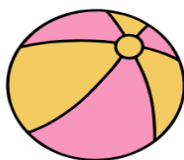
POP
CORN

YARD

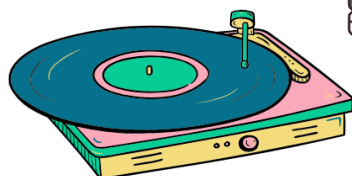
S



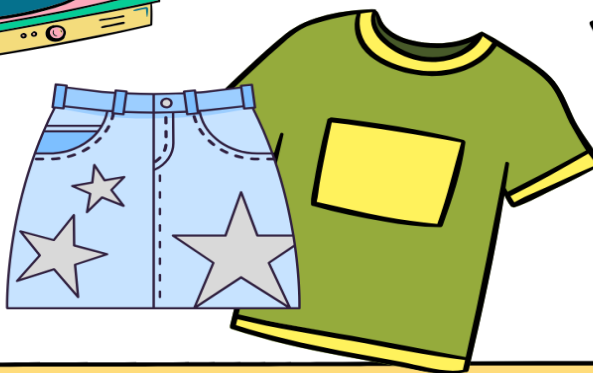
A



L



E



8:00 am - 2:00 pm

Friday, May 30 & Saturday May 31

Center for Spiritual Living
802 Maple Ave., Beaumont

SCIENCE OF MIND DISCUSSION GROUP

Please join the Science of Mind (SOM) Discussion Group in 2025

We meet the first Thursday of each month at 9:45am to discuss the previous month's magazine articles.

Discussion is from 10am to noon, led by Evonne Fowler and Sandy Schilling-Fetterman. This is followed by potluck lunch at Emmy Piddington's house, 40890 Laredo Trail, Cherry Valley. RSVP/information, contact Emmy at 951-765-7673

Save the date for SOM

**Thursday
May 1**

Everyone is welcome. Love offerings appreciated.
SOM magazines available in CSLB office for \$5.00



Science of Mind Discussion Group

FIRST THURSDAYS 9:50

**Come Early for "Coffee & Conversation" 9:30-10am
Handicapped Parking available**

E-Mail emmyloves2dance@gmail.com to RSVP



CSLB SPIRITUAL TOWN HALL SERIES

How to speak
Science
OF **Mind**

Love Offering \$5

1ST & 3RD
SUNDAY
OF EACH MONTH

CARTER HALL CLASSROOM #1
FROM 9 - 9:30 A.M

REVEREND DR. MICHAEL CURCURU
FACILITATES

PRACTICING SPIRITUAL PRINCIPLES



www.cslbeaumont.org

Thursdays (in Person)
1:00-2:30pm

Good Grief Support Group

Grief is a human experience, and can be more than just losing a loved one. It can be a loss of a pet, a career, or loss of self-esteem. We don't do it alone, we do it in community.

802 Maple Ave Beaumont



This is an on-going group. Everyone is welcome. You can just come when you need a compassionate ear.

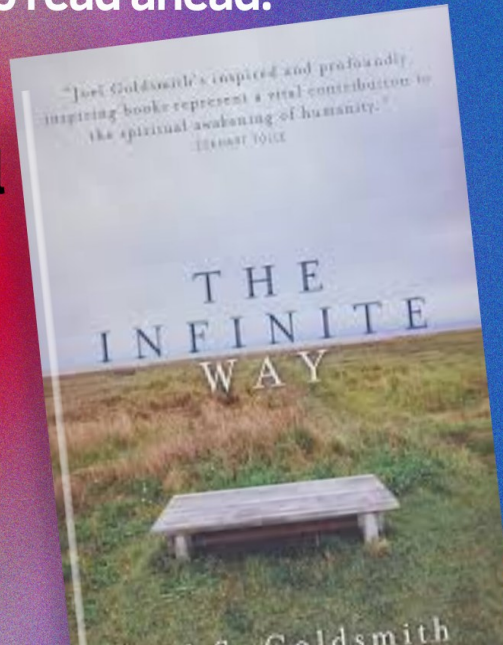
Joel Goldsmith Book Discussion

of the Book "The Infinite Way"

Join any week - no need to read ahead!

Bring the book and discuss the mystical teachings of Joel Goldsmith and his "Infinite Way"

RSVP to Evonne
or neil@cslbeaumont.org



at Evonne's Home
Led by Rev. Neil

Ongoing group
no "homework!"

**Thursdays
@ 4:00pm**
No Meetings the
first Thursday of
the Month

A New Way to Make Donations

CSL Beaumont is now offering Zelle as an easy, free, and secure option to donate to CSLB. Zelle is a bank-to-bank transaction without a fee. This is more secure since there is no third-party company involved. To use Zelle you need to go online to your account, either on a computer or on your bank phone app and see if they offer Zelle. You then select "Pay or Transfer", you will be asked who you want to pay. You just need to put in the Center's cell phone number, 951-845-6328 (this number has been linked to CSLB's Bank account for the purpose of this type of transfer). You will be asked for a name to identify who you are sending the money to. You only need to do this the first time. Enter for the amount you want to send. Verify the information and send it. Make sure you have the information right as there is no way to reverse the transfer. The transfers are almost immediate.

If you have questions check with Marsha
at 951-845-6328 or admin@cslbeaumont.org

CONNECT WITH CSL BEAUMONT

HELPFUL INFORMATION FOR CONNECTING

The Center for Spiritual Living Beaumont is now streaming Sunday Service on YouTube at:



<https://cslbeaumont.us16.list-manage.com/track/click=1021b37ed6f1c36f45fda9ce4&id=cc168104b6&e=e1539eb93f>

THERE ARE SEVERAL WAYS YOU CAN CONTINUE TO SUPPORT OUR CENTER

You can conveniently support our CSLB using ON-LINE GIVING by texting 951-420-6909, and put GIVE in the message area. It will ask you how much, and then for your payment information. You will only need to put in payment info once. You can select weekly, monthly, or annually. If you need to make changes, you can text to the above number and instead of GIVE, enter CHANGE, and it will guide you to make your changes.

You can also go directly to our Breeze system at <https://cslbeaumont.breezechms.com/give/online>, which is a more secure link. You will see the same form, but you will have the option to create an account within Breeze. Once this is done you can access, view, and make changes to your personal account anytime.

To get help with donations: call Marsha 951-212-1477
To submit a Prayer Request: email - neil@cslbeaumont.org

Connect with CSL Beaumont at:

Meetup

admin@cslbeaumont.org
951-845-6328.
www.cslbeaumont.org

**The Center office is now open from 9:00 to
12:00 pm on Wednesday,
and Thursday.**

Center for Spiritual Living Beaumont
802 Maple Avenue Beaumont, CA 92223
951-845-6328 - admin@cslbeaumont.org

May—2025

Sunday	Monday	Tuesday	Wednesday	Thursday	Friday	Saturday
				1	2	3
				Office Open 9-12 9:50 AM Science of Mind Discussion Group 1:00 PM —Grief Support Group 4:00 PM —Book Group /Canceled		
4	5	6	7	8	9	10
10:00 AM – In Person & Online Service Rev. Dr. Michael Curcuru Music: George Melton After Service Fellowship			Office Open 9-12	Office Open 9-12 1:00 PM —Grief Support Group 4:00 PM —Book Discussion Group		
11	12	13	14	15	16	17
10:00 AM – In Person & Online Service Rev. Dr. Michael Curcuru After Service Fellowship Mother’s Day Brunch	10:00 PM Events Team 12:00 PM - Membership Services Team		Office Open 9-12 Metaphysical Movie & Spaghetti Dinner 5:00 to 8:00	Office Open 9-12 1:00 PM —Grief Support Group 4:00 PM —Book Discussion Group		
18	19	20	21	22	23	24
10:00 AM – In Person & Online Service Rev. Neil Haner Music: Al Yankee After Service Fellowship			Office Open 9-12 4:30 PM Finance Team	Office Open 9-12 1:00 PM —Grief Support Group 4:00 PM —Book Discussion Group	CSLB Yard Sale 8:00 to 2:00	CSLB Yard Sale 8:00 to 2:00
25	26	27	28	29	30	31
10:00 AM – In Person & Online Service Rev. Dr. Michael Curcuru After Service Fellowship	12:00 PM Board Meeting		Office Open 9-12	Office Open 9-12 1:00 PM —Grief Support Group 4:00 PM —Book Discussion Group		



COMING IN JUNE
Visioning Class - Six Weeks